

\$405,000

OFFICE FOR SALE

200 Outlet Pointe Boulevard, Columbia, SC 29210



NEW LISTING

JAKE MEINZER

Broker

(513) 265-6348

jake@eastcre.com

335045/133385, NC/SC

PROPERTY DESCRIPTION

This excellently maintained office / medical office is now available in Columbia, SC. Located just seconds from Interstate 20, the building is well suited for a variety of businesses and medical practitioners. Encompassing over 2,600 square feet, the building includes 4 small offices/exam rooms, 2 additional private offices, 3 bathrooms, lobby/reception, file room, kitchenette, and ample additional space. With great proximity and easy access, this property offers a rare opportunity for small business / medical practice to own their building.

SUMMARY

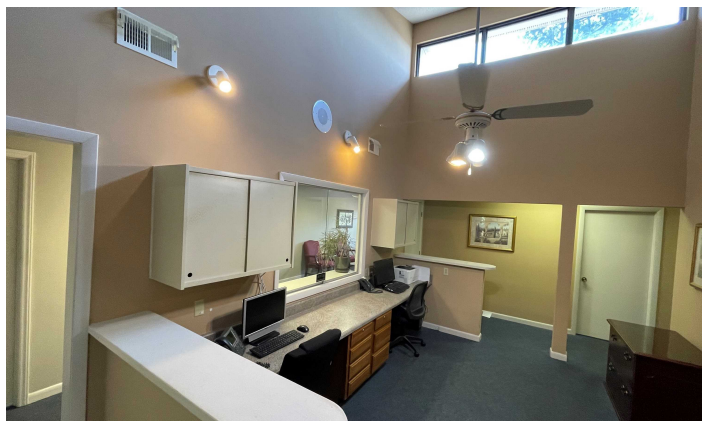
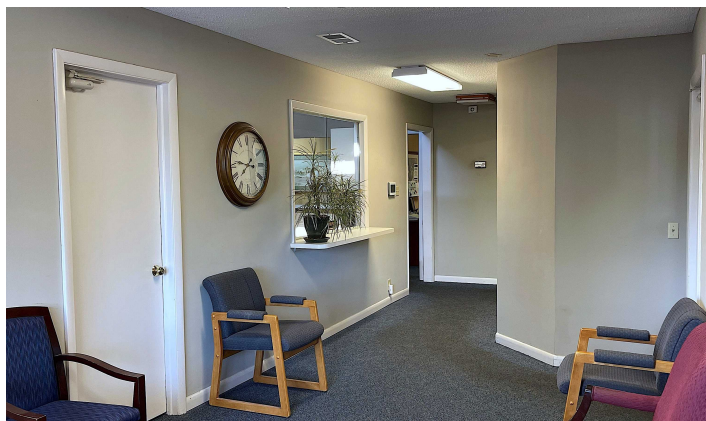
| | |
|--------------|-------------------------|
| APN: | 00369706017 |
| Building SF: | 2,601 |
| Year Built: | 1986 |
| Lot Size: | 0.62 Acres |
| Zoning: | LC - Limited Commercial |



OFFICE FOR SALE

200 OUTLET POINTE BOULEVARD

\$405,000



PROPERTY DESCRIPTION

This excellently maintained office / medical office is now available in Columbia, SC. Located just seconds from Interstate 26, and next door to the SC Dept. of Revenue, the building is well suited for a variety of businesses ranging from Accounting / CPA's to medical practitioners. Encompassing over 2,600 square feet, the building includes 4 small offices/exam rooms, 2 additional private offices, 3 bathrooms, lobby/reception, file room, kitchenette, and ample additional space. With great proximity and easy access, this property offers a rare opportunity for a small business / medical practice to own their building.

PROPERTY OVERVIEW

| | |
|--------------|---|
| PRICE: | \$405,000 |
| ADDRESS: | 200 Outlet Pointe Boulevard Columbia, SC 29210 |
| APN: | 00369706017 |
| BUILDING SF: | 2,601 |
| LOT SIZE: | 0.62 Acres |
| YEAR BUILT: | 1986 |
| ZONING: | LC - Limited Commercial |



EAST CRE | KW COMMERCIAL
14045 Ballantyne Corp Place, Ste 500
Charlotte, NC 28277

JAKE MEINZER
Broker
O: (513) 265-6348
C: (513) 265-6348
jake@eastcre.com
335045/133385, NC/SC

Each Office Independently Owned and Operated